

SMART HOME MONITORING



Small Appliance Module

Set-Up Guide

Thanks for choosing Rogers Smart Home Monitoring!

Once you've set-up your Small Appliance Module, you will be able to turn your small appliances on or off remotely and set up custom schedules, like having your coffee maker automatically start brewing when you wake up in the morning.

Let's begin!

Helpful hints

Please refer to the enclosed **manufacturer's installation guide** for operating and safety instructions. To avoid injury, read all set-up and safety information included in your package before installing and setting up your device. As set out in your service agreement, Rogers will not be liable for any damage to your property as a result of your installation. If you encounter a problem setting up your device, or wish to book a Rogers technician to come set it up, please call Rogers Technical Support at **1-888-764-3771** or visit www.rogers.com/install.

Package contents

1. Small Appliance Module
2. Manufacturer's installation guide

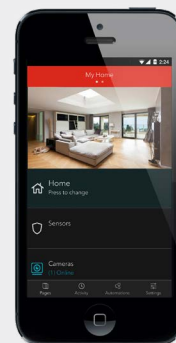
Installation notes

1. Install the Small Appliance Module using the manufacturer's installation guide provided in the box.
2. Pair the Small Appliance Module to your Smart Home Monitoring system using this guide.

Which Smart Home Monitoring plan do you have?

1. Basic Plan

You'll be installing this device with your smartphone today. to go to Section 1.



or

2. Aware, Assure, Protect, Control Plan

You'll be installing this device with your Touchpad today. to go to Section 2.



Can't remember which plan you're on? Login to your MyRogers account and look under "Account Services" or visit smarthome.rogers.com.

Helpful hints:

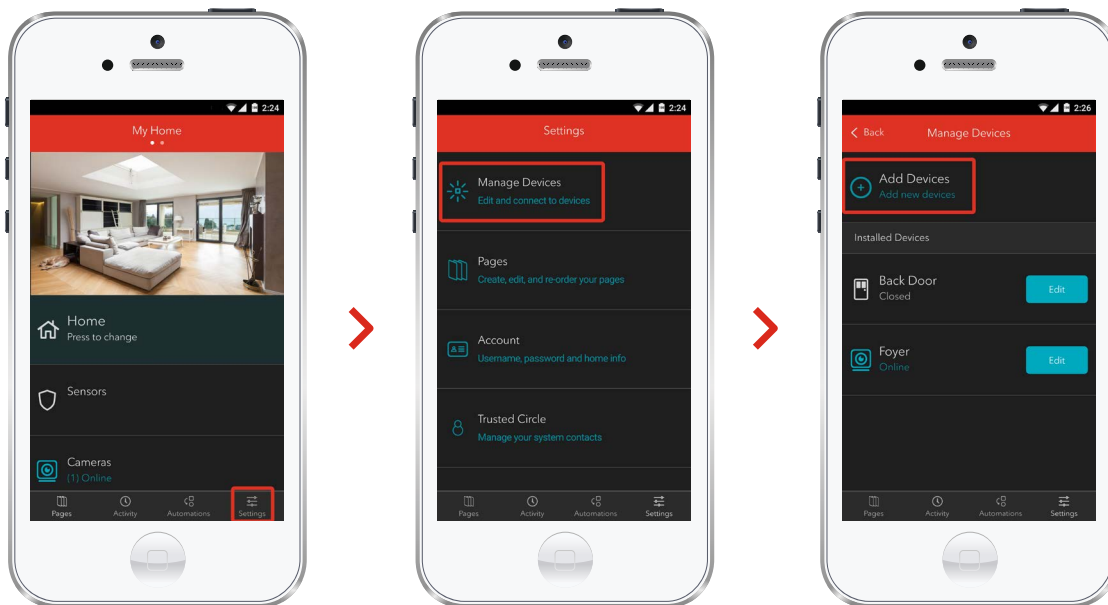
Please refer to the enclosed **manufacturer's installation guide** for operating and safety instructions. To avoid injury, read all set-up and safety information included in your package before installing and setting up your device. As set out in your service agreement, Rogers will not be liable for any damage to your property as a result of your installation. If you encounter a problem setting up your device, or wish to book a Rogers technician to come set it up, please call Rogers Technical Support at **1 888 764-3771** or visit www.rogers.com/install.

① Pairing the Small Appliance Module with your smartphone

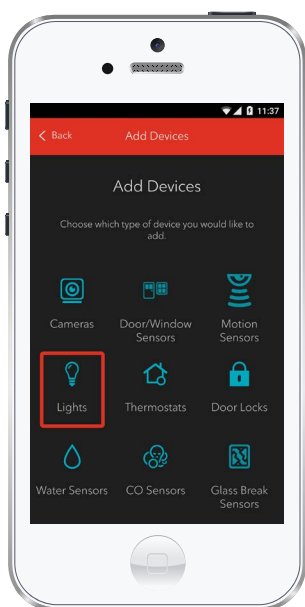
Before you begin:

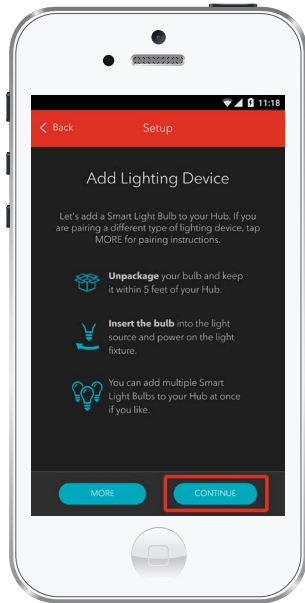
Login to your Rogers Smart Home Monitoring app. (Can't remember your login info? Visit rogers.com to retrieve your username or password). The pairing instructions below should be followed once you have completed the activation of your Smart Home Monitoring system.

1. Login to your Rogers Smart Home Monitoring app. (Can't remember your login info? Visit rogers.com to retrieve your username or password).
2. On **My Home** screen, tap **Settings**, then **Manage Devices** then **Add Devices**.



3. Tap **Lights**.





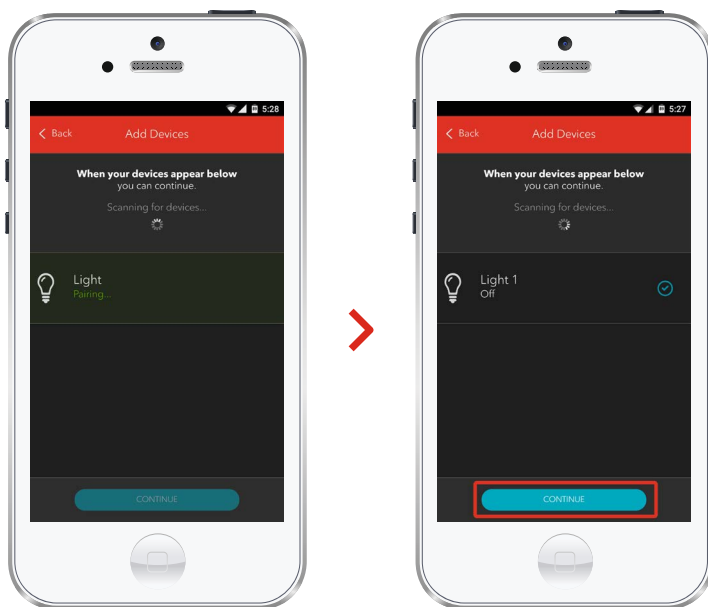
4. Prepare your Small Appliance Module to be paired following the simple instructions on your screen. For more detailed instructions, you can tap [More](#).

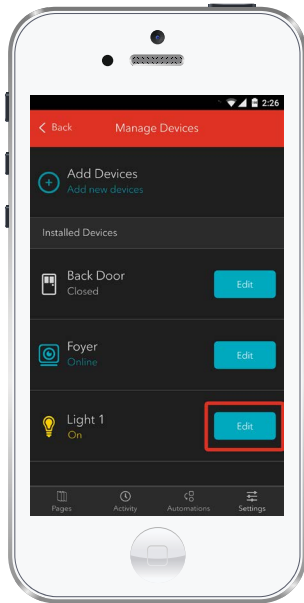
5. Once the Small Appliance Module is detected you will see the **Light** icon, and **Pairing...** will appear.

Once pairing is complete, a blue check mark will appear to the right.

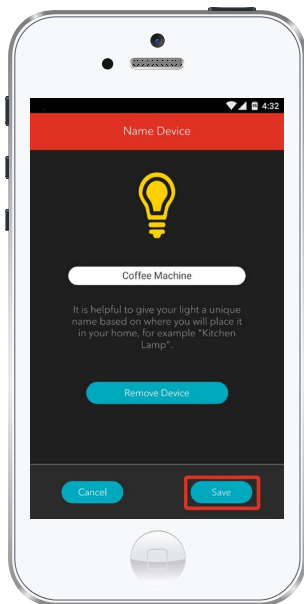
Please note the Hub may take between 1 to 3 minutes to detect the Small Appliance Module.

Tap **Continue** to complete pairing.





6. Tap **Edit** to configure the Small Appliance Module.



7. The naming box shows the default name of Small Appliance Module. Tap on this box to customize its name (e.g. Coffee Machine).

When you're done, tap **Save**.

Your installation is done!

Your Small Appliance Module is now part of your Smart Home Monitoring system. Now you can control your small appliances remotely with your smartphone app and through the Web Control Centre.

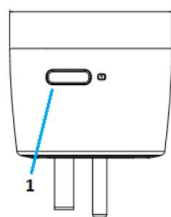
Start using this device:

Use your smartphone app or visit the Web Control Centre at smarthome.rogers.com to:

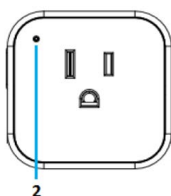
- Turn your appliances on and off remotely.
- Set up rules such as turning your lights on and off at scheduled times.
- Learn more about the features of your Smart Home Monitoring system.

How to reset this device:

If you are trying to add your Small Appliance Module to your Smart Home Monitoring system and you are unable to pair it in the first few attempts, or if you see an error while pairing, try the following steps to reset the Small Appliance Module and then pair it again.



1. Remove the Small Appliance Module from the wall outlet.
2. Press and hold the small white power button as shown on the left.



3. While holding the button plug the device back into the wall. The Green LED will come on and when it turns off, release the button and the Green LED should start blinking. The LED location is shown on the left.
4. Now, try the pairing process again.

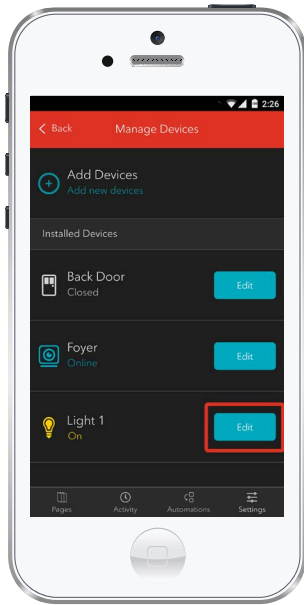
Troubleshooting:

If the device appears to be functioning improperly, please follow the suggested steps:

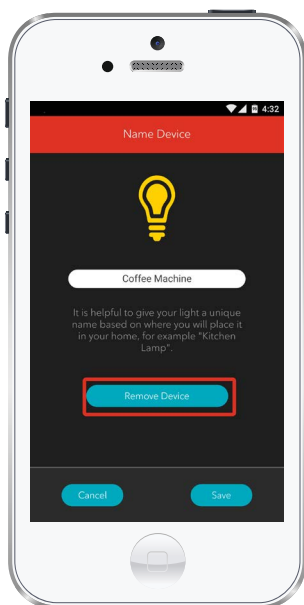
1. Confirm that the device is being supplied from a 120V power source.
2. Confirm that the device is being controlled in a proper way (local switch is ON).
3. Ensure that the appliance does not exceed 15A current.

How to remove this device from your system:

If at any point in the future, you'd like to remove the Small Appliance Module from your Rogers Smart Home Monitoring system, follow the steps below:



1. Login to your Rogers Smart Home Monitoring mobile app.
2. On **My Home** screen, tap **Settings** at the bottom.
3. Go to **Manage Devices**.
4. Under **Installed Devices**, select the Small Appliance Module you want to remove by tapping **Edit** next to the device name.



5. Under **Edit Device**, tap **Remove Device** (see example).
6. Tap **Save** to confirm.

② Pairing the Small Appliance Module with your Touchpad

Before you begin:

Plug the Small Appliance Module into an electrical outlet and follow the steps below to pair it with your system, using your Rogers Smart Home Monitoring Touchpad.



1. Plug the Small Appliance Module into any standard wall outlet.
2. Ensure your Smart Home Monitoring system is disarmed.
3. On the Touchpad, select the **Settings** app from the Home Screen.



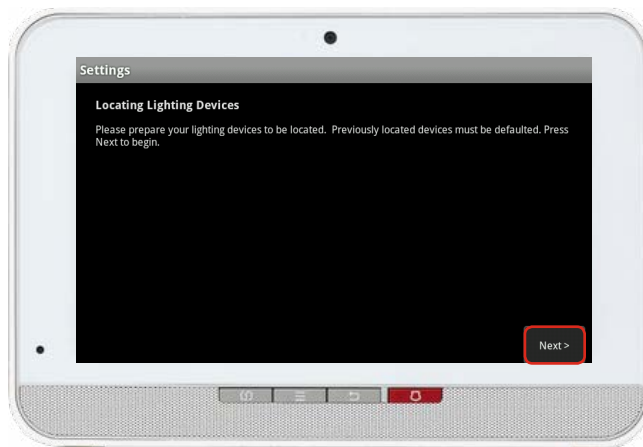
4. Enter your **4-digit** Master Access Code. (The same code that you use to manage your system.)



5. Select **Home Devices** under the **Categories** list.



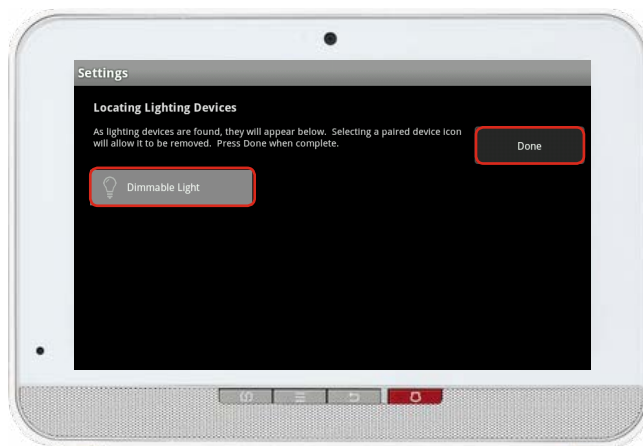
6. Scroll down and select **Lighting**, then select **Add Lights**.



7. On the **Locating Lighting Devices** screen press **Next**.

8. On the Touchpad a Pairing icon will appear and change to an On/Off Light icon once pairing is complete. Please note this may take 2 to 5 minutes.

9. Click **Done** once the On/Off Light icon appears and hit **Next** to confirm.



10. The On/Off Light icon will appear again. Tap on it to customize its name (i.e. Hair dryer).

11. Click **Return to Menu** to complete pairing of the Small Appliance Module.

Your installation is done!

Your Small Appliance Module is now part of your Smart Home Monitoring system. Now you can control your small appliances remotely with your smartphone app and through the Web Control Centre.

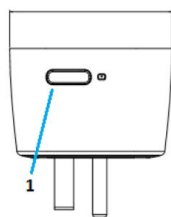
Start using this device:

Use your smartphone app or visit the Web Control Centre at smarthome.rogers.com to:

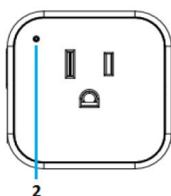
- Turn your appliances on and off remotely.
- Set up rules such as turning your lights on and off at scheduled times.
- Learn more about the features of your Smart Home Monitoring system.

How to reset this device:

If you are trying to add your Small Appliance Module to your Smart Home Monitoring system and you are unable to pair it in the first few attempts, or if you see an error while pairing, try the following steps to reset the Small Appliance Module and then pair it again.



1. Remove the Small Appliance Module from the wall outlet.
2. Press and hold the small white power button as shown on the left.



3. While holding the button plug the device back into the wall. The Green LED will come on and when it turns off, release the button and the Green LED should start blinking. The LED location is shown on the left.
4. Now, try the pairing process again.

Troubleshooting:

If the device appears to be functioning improperly, please follow the suggested steps:

1. Confirm that the device is being supplied from a 120V power source.
2. Confirm that the device is being controlled in a proper way (local switch is ON).
3. Ensure that the appliance does not exceed 15A current.

How to remove this device from your system:

If at any point in the future, you'd like to remove the Small Appliance Module from your Rogers Smart Home Monitoring system, follow the steps below:



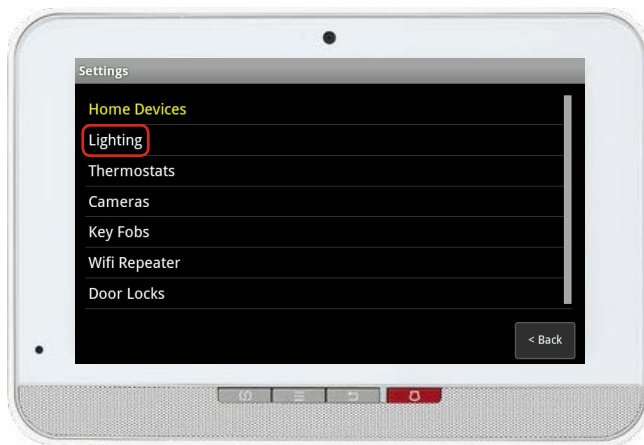
1. Ensure your Smart Home Monitoring system is disarmed.
2. On the Touchpad, select the **Settings** app from the Home Screen.



3. Enter your **4-digit** Master Access Code (This is the same code that you use to manage your system.)



4. Select **Home Devices** under the **Categories** list.



5. Under **Home Devices**, select **Lighting**. On the next screen, select **Delete Lights**. Now, select the Small Appliance Module you want to delete and press **Yes** to confirm. The Small Appliance Module you selected has now been removed from your system.
6. Click **Return to Menu** to exit the screen.